



# 2024 Annual Meeting

October 2024





## Lake Norman Little League

- ❖ Lake Norman Little League, established in 2011, is a non-profit, 100% volunteer-run, baseball and softball organization affiliated with Little League® Baseball and Softball. Little League believes in the power of youth baseball and softball to teach life lessons that build stronger individuals and communities. Joined together by one common goal, every local league is part of One Team. One Little League. The league's boundary resides within Little League's North Carolina District 3 serving youth in Huntersville, Cornelius, and the surrounding areas of the southeast Lake Norman region.

# League Charters

## 2024 LITTLE LEAGUE® *Certificate of Charter*

*This certifies that*

### Lake Norman Little League

*is an official Little League program for the 2024 season and agrees to adhere to the rules, regulations, and policies of Little League Baseball, Incorporated. As a proud member of the Little League community, this league believes in the power of youth baseball and softball to teach life lessons that build stronger individuals and communities and will work together as One Team. One Little League.*



**ISSUED JANUARY 1, 2024 AT WILLIAMSPORT, PENNSYLVANIA**

*Stephen D. Keener*  
Little League President and CEO



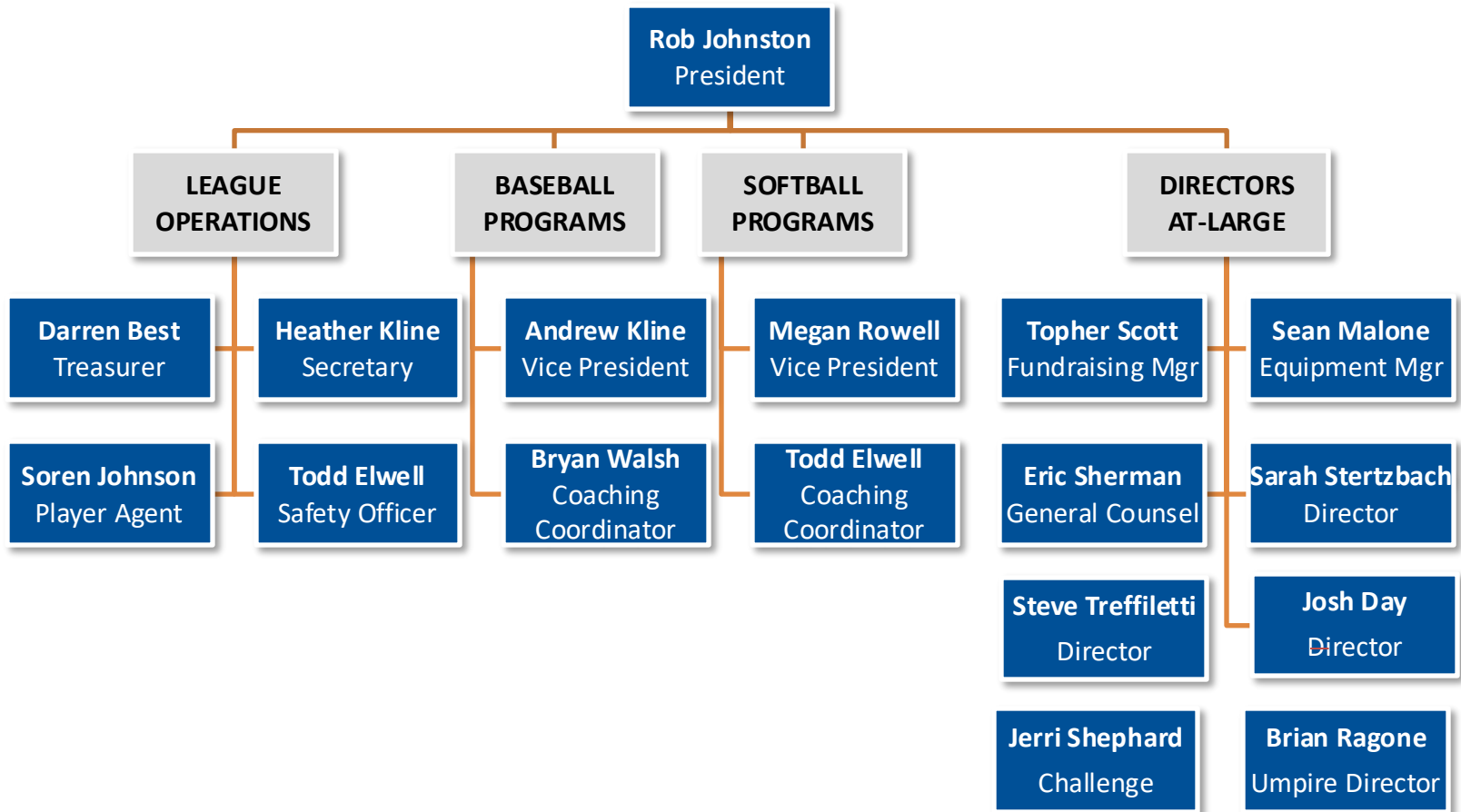
**Little League Charter**  
(Tee Ball through Senior League)



**Babe Ruth League Charter**  
(18U Baseball)



# Board of Directors







# Little League Baseball & Softball

North Carolina's District 3

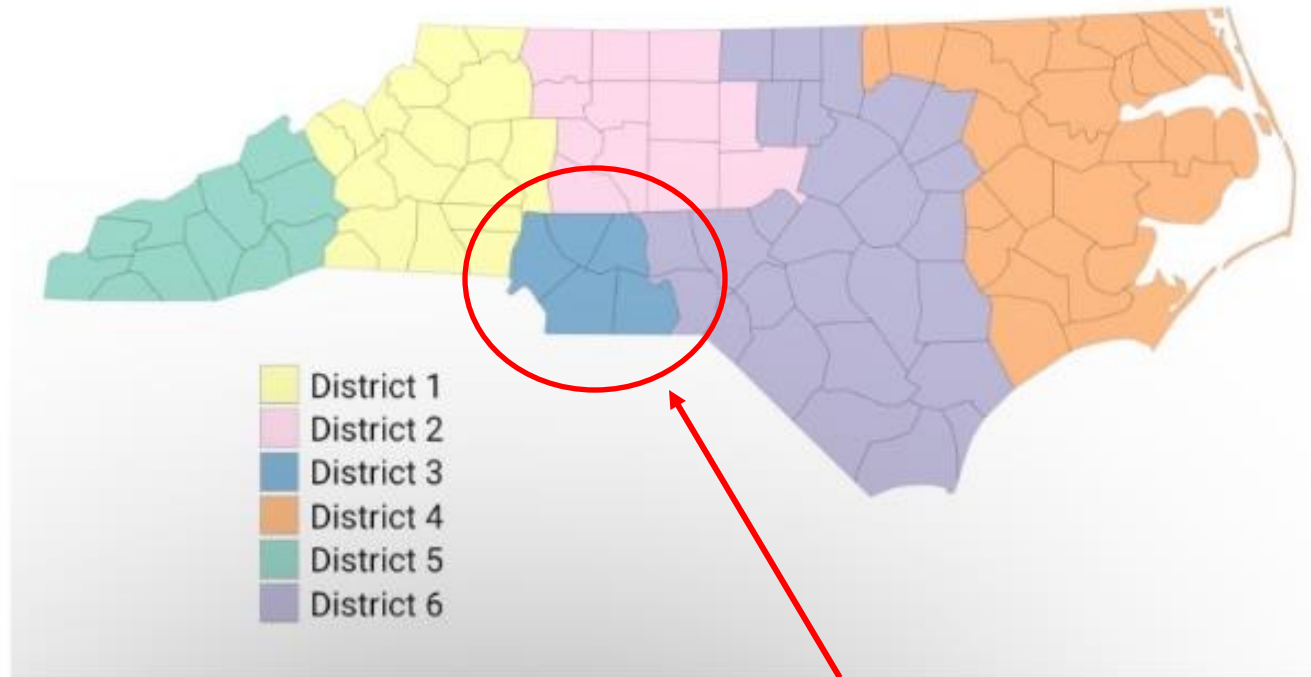
Southeast Region

(Alabama, Florida, Georgia, North Carolina, South  
Carolina, Tennessee, Virginia, West Virginia)



# NC Little League Districts

**North Carolina Little League District Map (2022)**



# Player Eligibility – Residency

- Age-eligible youth that reside or attend school within our league boundaries have full eligibility for participation.
- Little League boundary regulations are designed to maintain a community, hometown spirit.
- No Little League boundary can overlap or encroach on another chartered Little League's boundary.





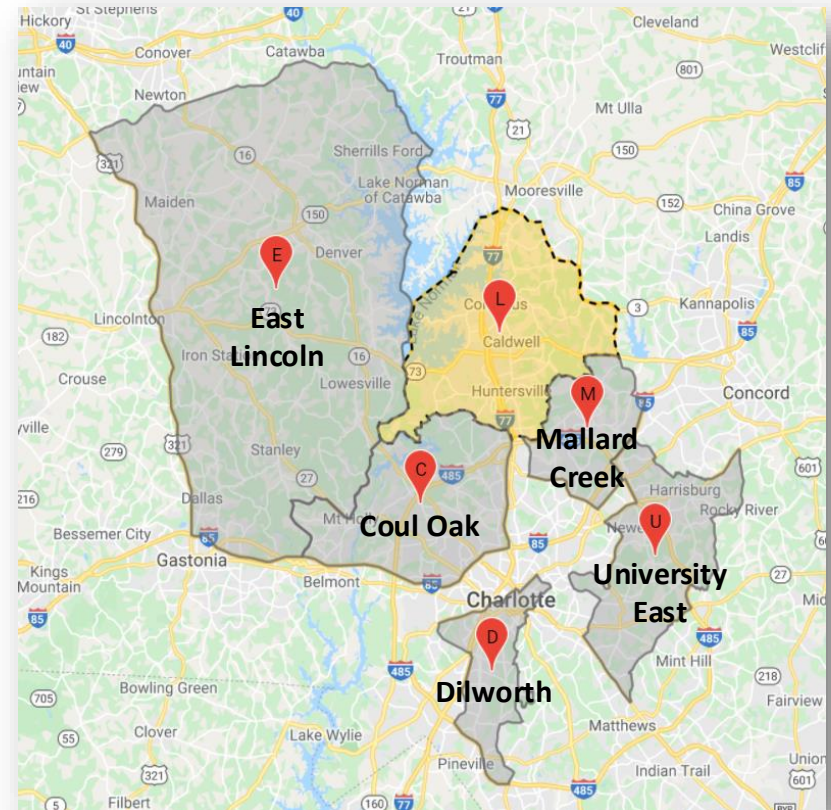


# Softball Boundary

## LKNLL Softball



## NC District 3 Softball



# Player Eligibility – League Age

- Little League Baseball

- Divisions of play are structured by league age
- Fall '24 & Spring '25 seasons reference the 2025 Little League Age Chart for Baseball
- The Age Determination Date is the actual age of a child on August 31, 2025.

## 2025 Little League® Age Chart



Match month (top line) and box with year of birth. League age indicated at right.

JAN	FEB	MAR	APR	MAY	JUN	JUL	AUG	SEP	OCT	NOV	DEC	AGE
2021	2021	2021	2021	2021	2021	2021	2021	2020	2020	2020	2020	4
2020	2020	2020	2020	2020	2020	2020	2020	2019	2019	2019	2019	5
2019	2019	2019	2019	2019	2019	2019	2019	2018	2018	2018	2018	6
2018	2018	2018	2018	2018	2018	2018	2018	2017	2017	2017	2017	7
2017	2017	2017	2017	2017	2017	2017	2017	2016	2016	2016	2016	8
2016	2016	2016	2016	2016	2016	2016	2016	2015	2015	2015	2015	9
2015	2015	2015	2015	2015	2015	2015	2015	2014	2014	2014	2014	10
2014	2014	2014	2014	2014	2014	2014	2014	2013	2013	2013	2013	11
2013	2013	2013	2013	2013	2013	2013	2013	2012	2012	2012	2012	12
2012	2012	2012	2012	2012	2012	2012	2012	2011	2011	2011	2011	13
2011	2011	2011	2011	2011	2011	2011	2011	2010	2010	2010	2010	14
2010	2010	2010	2010	2010	2010	2010	2010	2009	2009	2009	2009	15
2009	2009	2009	2009	2009	2009	2009	2009	2008	2008	2008	2008	16

\*During the fall season players in the majors division and below are able to play in their 2024 or 2025 eligible division

NOTE: This age chart is for BASEBALL DIVISIONS ONLY, and only for 2025.

Player development needs considered for petitions to play down.



# Player Eligibility – League Age

- Little League Softball
  - Divisions of play are structured by league age
  - The Age Determination Date is the actual age of a child on December 31 of the prior year

\*During the fall season players in the majors division and below are able to play in their 2024 or 2025 eligible division

## 2025 Little League® Age Chart



Match month (top line) and box with year of birth. League age indicated at right.

JAN	FEB	MAR	APR	MAY	JUN	JUL	AUG	SEP	OCT	NOV	DEC	AGE
2020	2020	2020	2020	2020	2020	2020	2020	2020	2020	2020	2020	4
2019	2019	2019	2019	2019	2019	2019	2019	2019	2019	2019	2019	5
2018	2018	2018	2018	2018	2018	2018	2018	2018	2018	2018	2018	6
2017	2017	2017	2017	2017	2017	2017	2017	2017	2017	2017	2017	7
2016	2016	2016	2016	2016	2016	2016	2016	2016	2016	2016	2016	8
2015	2015	2015	2015	2015	2015	2015	2015	2015	2015	2015	2015	9
2014	2014	2014	2014	2014	2014	2014	2014	2014	2014	2014	2014	10
2013	2013	2013	2013	2013	2013	2013	2013	2013	2013	2013	2013	11
2012	2012	2012	2012	2012	2012	2012	2012	2012	2012	2012	2012	12
2011	2011	2011	2011	2011	2011	2011	2011	2011	2011	2011	2011	13
2010	2010	2010	2010	2010	2010	2010	2010	2010	2010	2010	2010	14
2009	2009	2009	2009	2009	2009	2009	2009	2009	2009	2009	2009	15
2008	2008	2008	2008	2008	2008	2008	2008	2008	2008	2008	2008	16

NOTE: This age chart is for SOFTBALL DIVISIONS ONLY, and only for 2025.

Player development needs considered for petitions to play down.



# Player Eligibility – League Age

- **Babe Ruth 18U Baseball Division**
  - Players who are age-eligible to participate in Senior League Baseball are encouraged to do so through the end of their Little League eligibility.
  - Fall '24 & Spring '25 seasons reference the 2025 Babe Ruth League Birth Chart for Baseball
  - Any player not 19 prior to 1/1/2025 can participate during the spring 2025 season (or 17 before 8/31/25).
  - Any player eligible to participate in high school athletics is eligible to participate.





# Community Partnerships



Abernathy Park

Alexander Middle School

Bradford Park

Bradley Middle School

Huntersville Athletic Park

Huntersville Elementary

North Mecklenburg Park

Torrence Creek Elementary

Waymer Park

Bailey Road Park

James Hoyt Wilhelm Park

Legion Park

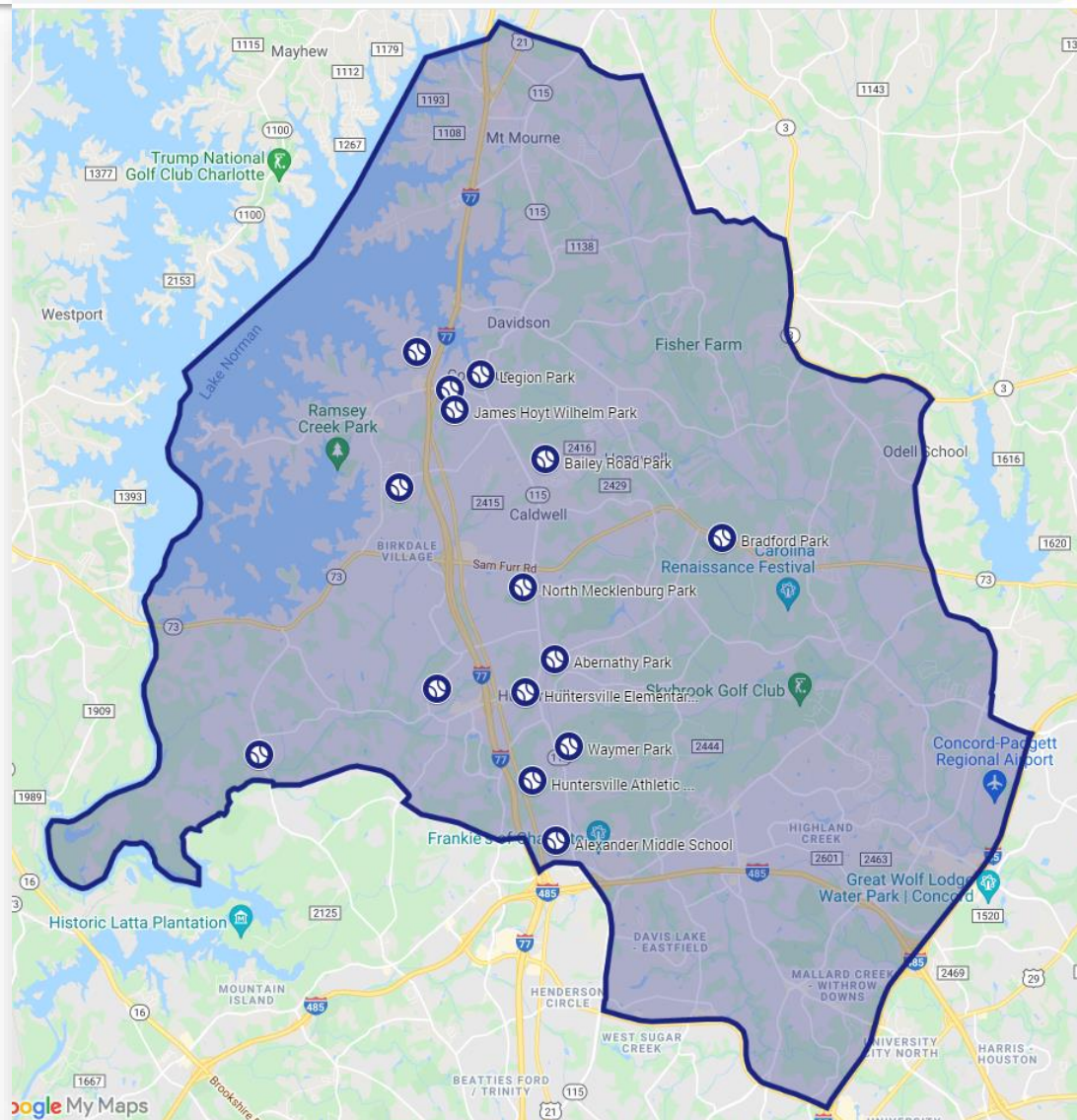
Smithville Park

Torrence Chapel Park

Westmoreland Athletic Complex



# Ballpark Locations



# Programs Report



# 2025 Divisions of Play



Baseball	League Ages	Softball	League Ages
Tee Ball	4-6		
A	6-7	Rookies	6-8
AA	7-8		
AAA	8-10	Minors	8-10
Majors	10-12	Majors	10-12
Junior League	13-14		
Senior League	14-16	Senior League	13-16
<b>Baseball</b>	<b>Ages</b>		
Babe Ruth	16-18		

**"Big League" Divisions**  
District League Game Schedules





# Program Notes

- The “Big League” Baseball and Softball divisions participate in a district league regular season game schedule requiring limited travel to neighboring leagues for away games.
- Depending on the number of players that register we may also have a Quad A division which is for 10 and 11 years that do not make a majors baseball team. Little League only allows league to have a max of 10 Majors teams within one league



# Spring 2024 All Star Recap

## TOC Champions

- Myers Park Hosted Modified tournament this season. No Champions were determined

## District Champions

- 8's Softball
- 8's Baseball
- 9's Baseball (Runner Up)
- 10's Baseball
- 11's Baseball
- 12's Baseball
- 12's Softball (Runner Up)
- 18u Babe Ruth Baseball

## State Appearance

- 8's Softball
- 8's Baseball (2 Teams)
- 9's Baseball
- 10's Baseball & Softball
- 11's Baseball
- 12's Baseball
- 18U Babe Ruth

## State Champions

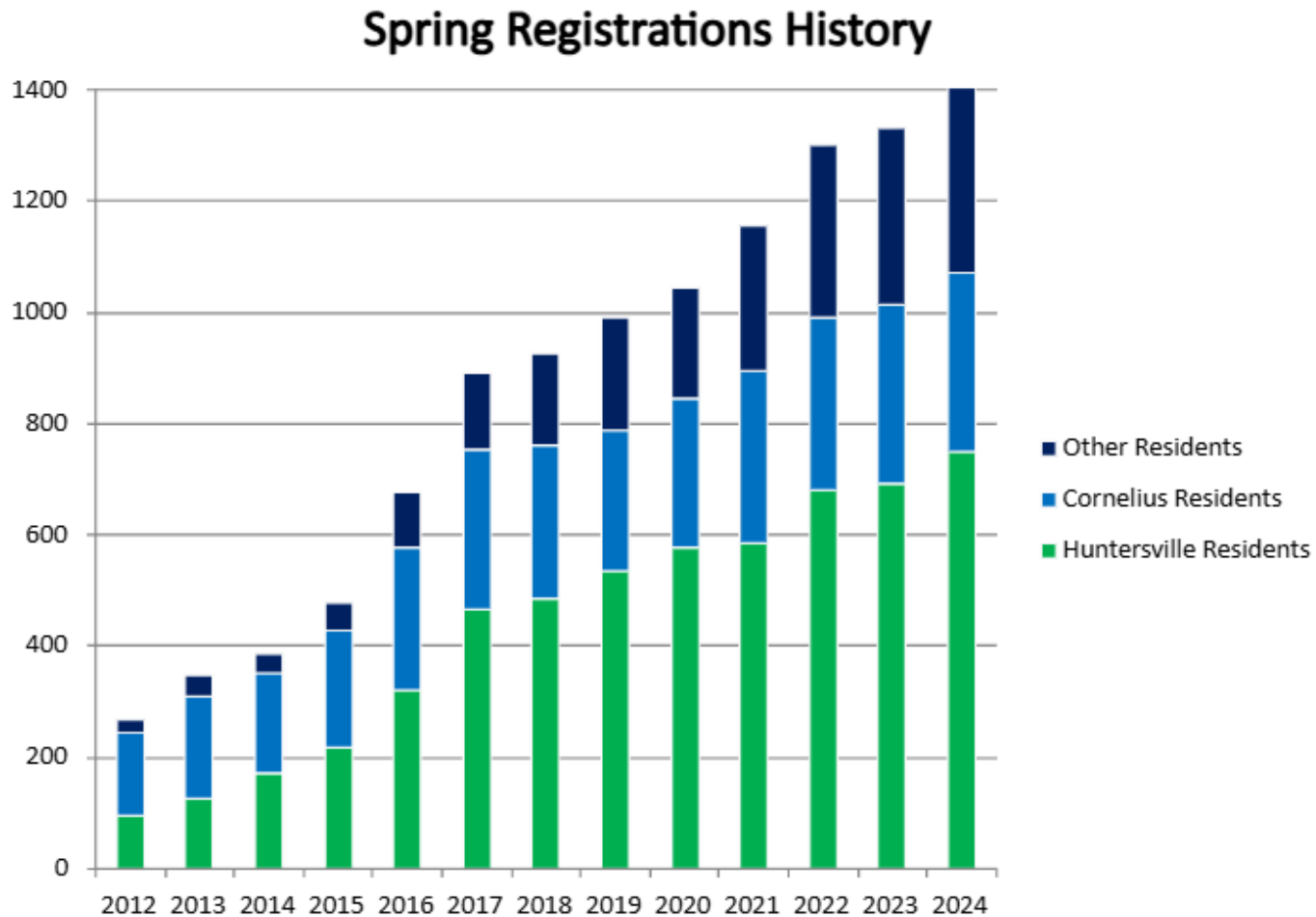
- 18u Babe Ruth

## Regional Appearance

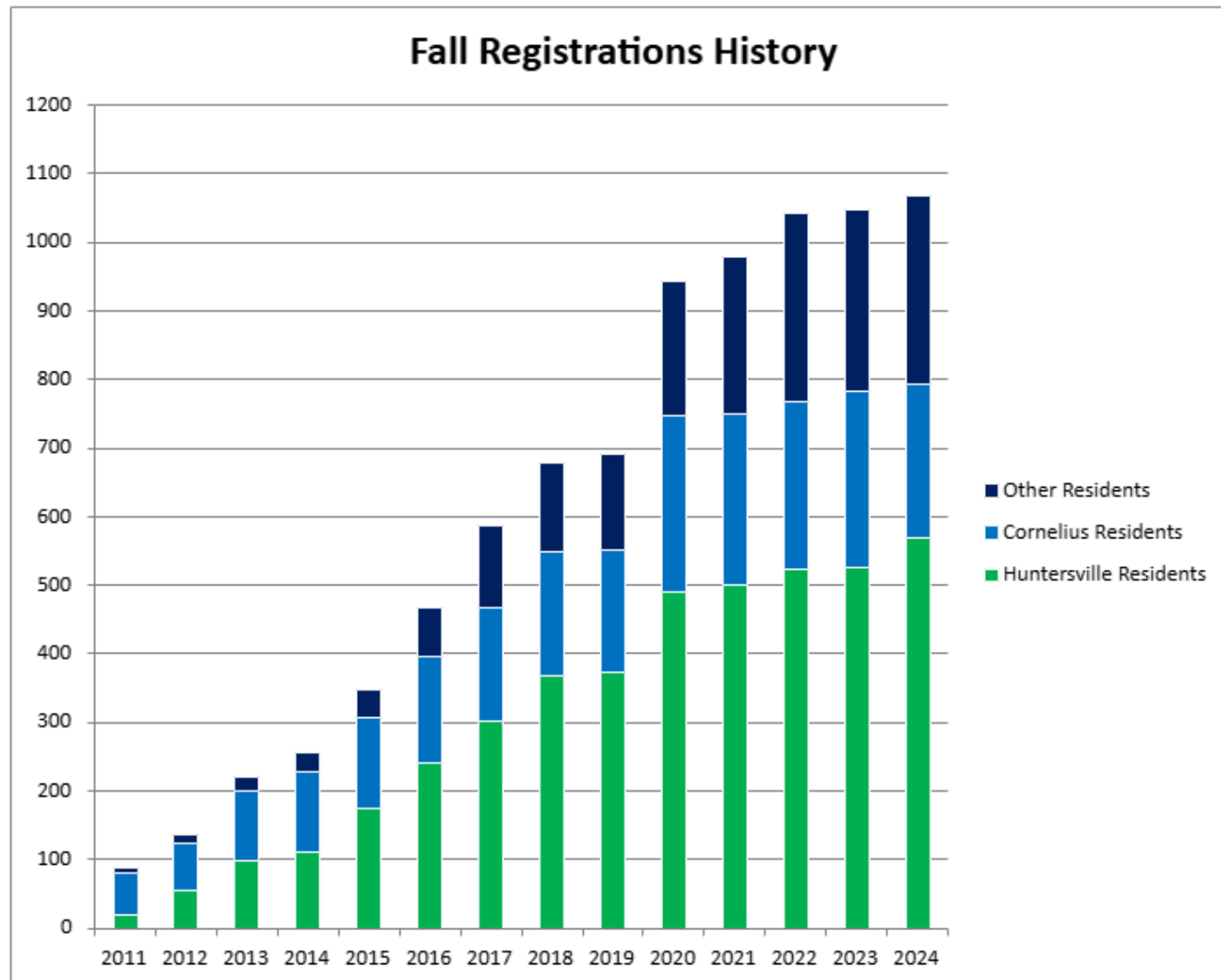
- 11's Baseball – Wilson, NC
- 18U Babe Ruth – Huntersville, NC



# Spring Registrations



# Fall Registrations





# Financial Summary



# Financial Statements

## INCOME STATEMENT SUMMARY

9/1/2023 – 8/31/2024

<b>REVENUE:</b>	
Registration	\$548,693
Sponsorship & Fundraising	\$62,198
<b>TOTAL REVENUE:</b>	<b>\$610,891</b>
<b>EXPENDITURES:</b>	
Operations	\$255,817
Uniforms	\$195,236
Fields	\$108,637
Administrative	\$27,671
<b>TOTAL EXPENDITURES:</b>	<b>\$587,361</b>
<b>NET INCOME / (LOSS):</b>	<b>\$23,530</b>

## STATEMENT OF ACCOUNT IN BALANCES

9/1/2023 – 8/31/2024

<b>OPERATING FUNDS:</b>	
Petty Cash	\$0
Bank Account Operating	\$111,298
<b>TOTAL OPERATING FUNDS:</b>	<b>\$111,298</b>
<b>DESIGNATED FUNDS:</b>	
Fall 2024 Scholarship Donations	\$350
Certificate of Deposit	\$0
<b>TOTAL DESIGNATED FUNDS</b>	<b>\$0</b>
<b>LONG TERM LIABILITIES:</b>	
Loan Payable	\$0

\*Fields expenditures from 2023 and 2024 usage of approximately \$3,320 remains to be paid at the discretion of the Town of Cornelius

\*Cornelius field usage for Fall 2023 was \$26,585 and Spring 2024 is \$37,203

\*Payments to Cornelius from 9/1/23 – 8/31/2024 total \$58,698, Huntersville \$49,939

\*Accounting method used by Lake Norman Little League is cash basis accounting



# League Membership



# League Membership

- Any person sincerely interested in active participation to further the objective of The League may apply to become a Member.
- Regular Members automatically include all current Coaches, Board Members, Officers of the Board and any other person who is recognized by the Board as a volunteer in the League.
- Only Regular Members in good standing are eligible to vote at General Membership Meetings.

# League Constitution



# League Constitution

- There have been no changes to the previously approved constitution.
- The Board of Directors motions for the Membership to approve the existing League Constitution for another year.



# Election of Directors



# Election of Directors

- Directors serve a three-year term.
- Directors may serve up to 3 consecutive terms.
- Members are requested to cast their vote for up to 4 Directors to fill vacant seats on the board.
- Votes shall be cast on the Election Ballot Google Form.
- Voting members shall use their email address associated with their volunteer account

# Members

- [Member Listing](#)



# Please Cast Your Vote

Thank You!

